

STANDARD DEPARTURE CHART- INSTRUMENT (SID) - ICAO

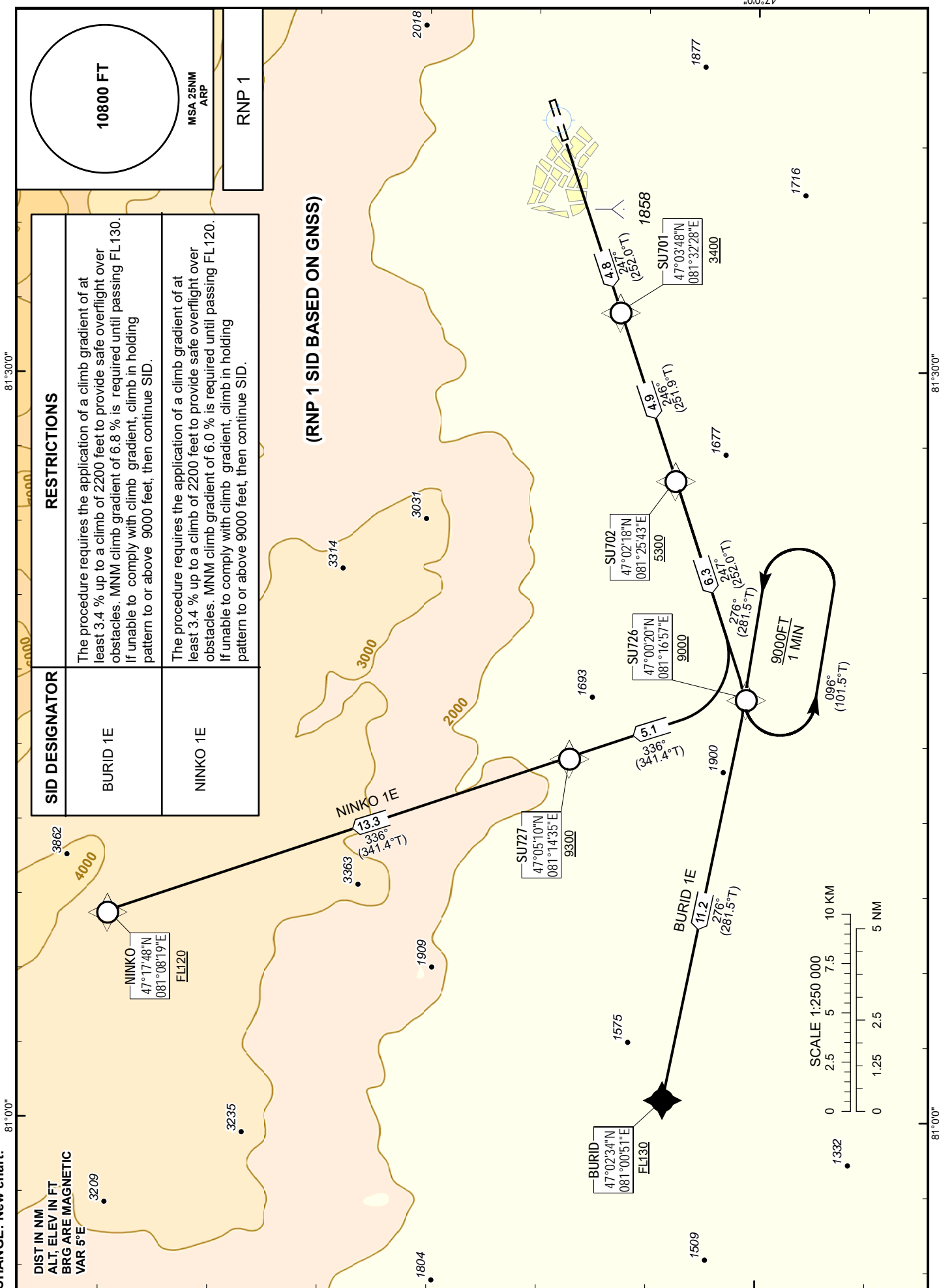
TRANSITION ALTITUDE
10000 FT

URDZHAR TOWER 123.0

BURID 1E, NINKO 1E

URDZHAR
RWY 25

CHANGE: New chart.



TABULAR DESCRIPTION

BURID 1E RWY25											
Serial Number	Path Descriptor	Waypoint Identifier	Fly - over	Course M°(T°)	Magnetic Variation(°)	Distance (NM)	Turn Direction	Altitude (FT)	Speed (KT)	VPA (°)	Navigation Specification
010	CF	SU701	-	247(252.0)	+5.4	4.8	-	+3400	-	-	RNP 1
020	TF	SU702	-	246(251.9)	+5.4	4.9	-	+5300	-	-	RNP 1
030	TF	SU726	-	247(252.0)	+5.4	6.3	-	+9000	-	-	RNP 1
040	HM	SU726	-	276(281.5)	+5.4	5.0	L	+9000	-	-	RNP 1
050	TF	BURID	-	276(281.5)	+5.4	11.2	-	+FL130	-	-	RNP 1

NINKO 1E RWY25											
Serial Number	Path Descriptor	Waypoint Identifier	Fly - over	Course M°(T°)	Magnetic Variation(°)	Distance (NM)	Turn Direction	Altitude (FT)	Speed (KT)	VPA (°)	Navigation Specification
010	CF	SU701	-	247(252.0)	+5.4	4.8	-	+3400	-	-	RNP 1
020	TF	SU702	-	246(251.9)	+5.4	4.9	-	+5300	-	-	RNP 1
030	TF	SU726	-	247(252.0)	+5.4	6.3	-	+9000	-	-	RNP 1
040	HM	SU726	-	276(281.5)	+5.4	5.0	L	+9000	-	-	RNP 1
050	TF	SU727	-	336(341.4)	+5.4	5.1	-	+9300	-	-	RNP 1
060	TF	NINKO	-	336(341.4)	+5.4	13.3	-	+FL120	-	-	RNP 1

WAYPOINT COORDINATES

Waypoint Identifier	Coordinates	
DER	470517.65N	0813907.80E
SU701	470348.38N	0813227.89E
SU702	470217.52N	0812542.98E
SU726	470020.39N	0811657.49E
SU727	470510.34N	0811434.59E
BURID	470234.00N	0810051.00E
NINKO	471748.00N	0810819.00E